



Commercial Workspace Solutions



Manufactured by Young Industry Indonesia
Division of Young Corporation

Built for Commercial Workspace Projects

- Modular workspace systems
- Export-oriented manufacturing
- Commercial project integration
- Flexible workplace solutions
- OEM & private label solutions

Manufactured by Young Industry Indonesia
Division of Young Corporation



YOUNG CORPORATION

Young Corporation is a multinational manufacturing and trading. Young Corporation currently operates an impressive portfolio of diverse businesses in US, Europe and parts of Asia.



This global footprint enables us to monitor and better provide for our customers' needs worldwide. Young Corporation continues to expand globally and nationally with the addition of both new production capacity as well as new product lines and real-estate developments that are complementary to our business.

Young Corporation was founded in 1986 by Mr. Philip Young, an entrepreneur with strong roots in China, Indonesia and the USA. His aim has been to bring the best of his experiences and business values from all cultures to produce world class products and customer experiences to the construction and property development industry.

INDEX



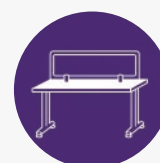
04

Axis



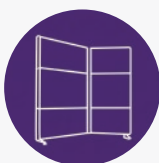
08

Adjustable



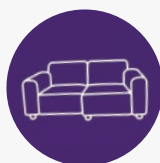
10

Panel



12

Divide



16

Modular Sofa



20

Office Chairs



AXIS

Bench System

(FONTANA, HEXALE, AVENTURA, LOOP)

Modern modular desk system designed for flexible office layouts. Built for daily productivity with clean design, efficient cable management, and customizable finishes.

Manufactured by Young Industry Indonesia
Division of Young Corporation

LOOP DESK

Straight Series



HEXALE DESK

Straight Series



AVENTURA DESK

Straight Series



FONTANA DESK

Straight Series



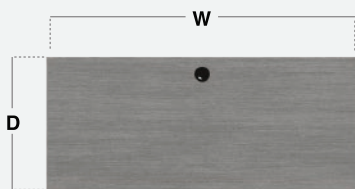
FONTANA DESK

Ergonomic (Left / Right)



PRODUCT SPECIFICATIONS

Straight Series



Work Desk

W 1000mm - 1800mm

W 3' 3" - 5' 11"

D 600mm - 800mm

D 2' - 2' 7"

H 740mm - 750mm

H 2' 5" - 2' 6"

Meeting Table

W 2000mm - 2400mm

W 6' 7" - 7' 10"

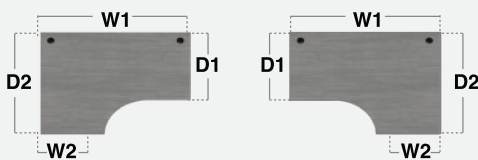
D 1200mm

D 3' 11"

H 740mm - 750mm

H 2' 5" - 2' 6"

Ergonomic (Left / Right)



Work Desk

W1 1400mm - 1800mm

W1 4' 7" - 5' 11"

D1 600mm - 800mm

D1 2' - 2' 7"

H 740mm - 750mm

H 2' 5" - 2' 6"

W2 600mm

W2 2'

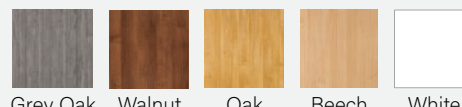
D2 1200mm

D2 3' 11"

STANDARD SPEC

Countertop Thickness : 25mm / 1"
 Grommet : Included
 Modesty Thickness : 18mm / 0.7"
 Metal Leg Finish : Powder Coating

FINISH OPTION



Grey Oak Walnut Oak Beech White

METAL LEG COLOR



White Silver Black

CONFIGURATION OPTIONS

Work Together. Achieve More.



RECOMMENDED CONFIGURATIONS



1



2



3



2



4



6



1



2



4

AVAILBALE OPTIONS

Mobile Pedestal 2 Drawers



Available size
W 430mm (1' 5")
D 500mm (1' 8")
H 565mm (1' 10")

Included

- Handle
- Lock

Mobile Pedestal 3 Drawers



Available size
W 430mm (1' 5")
D 500mm (1' 8")
H 565mm (1' 10")

Included

- Handle
- Lock

Cable Tray

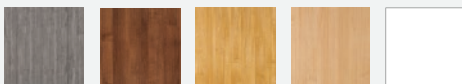


Material
Metal Plat

Finishing
Powder Coating

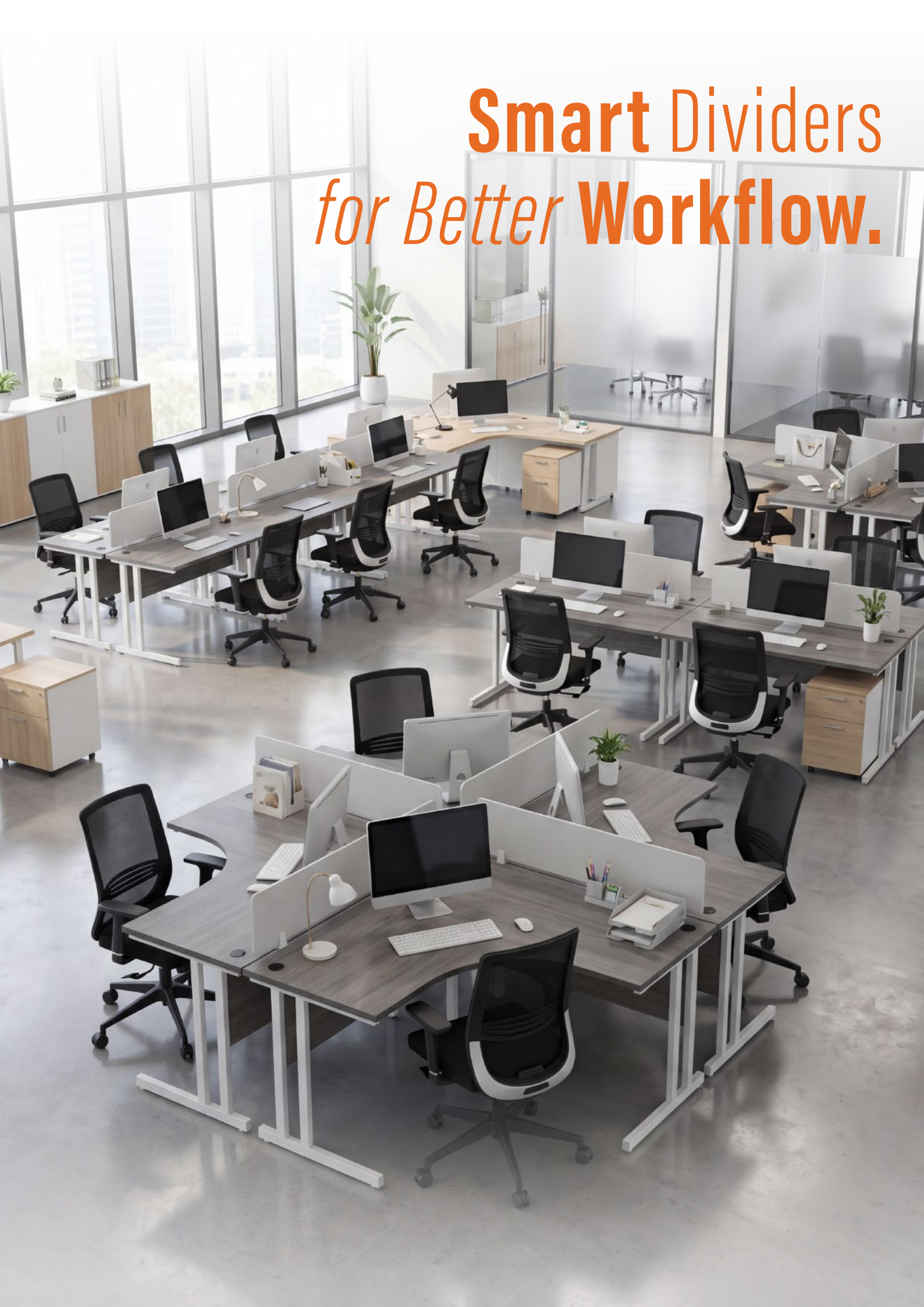
Color
White

FINISH OPTION



Grey Oak Walnut Oak Beech White

Smart Dividers *for Better* Workflow.





ADJUSTABLE Bench System

MODULAR ADJUSTABLE HEIGHT DESKING

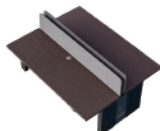
Our modular desking blurs the line between casegoods and systems furniture, offering solutions from freestanding to panel-supported designs. Can be paired with modular wall systems.

Manufactured by Young Industry Indonesia
Division of Young Corporation



Modular office desk system. Easily adaptable for collaborative spaces or individual work areas. Designed for efficiency, aesthetics, and modern ergonomic flexibility.

Configuration Options



STANDARD SPEC

Countertop Thickness : 25mm / 1"

Grommet : Included

Modesty Thickness : 18mm / 0.7"

Metal Leg Finish : Powder Coating

METAL LEG COLOR



White



Silver



Black

FINISH OPTION



Grey Oak



Walnut



Oak



Beech



White



PANEL

Desking System

U-Shaped Workspace
Flexible Design
More Storage & Cabinet Options

Manufactured by Young Industry Indonesia
Division of Young Corporation



**MOBILE
PEDESTAL
2 DRAWERS**

Code	W	D	H
P2D	430	500	565



**MOBILE
PEDESTAL
3 DRAWERS**

Code	W	D	H
P3D	430	500	565



**FIX HANGING
PEDESTAL**

Code	W	D	H
F2D	400	452	510



**BOOK CASE
WITH DOOR
WWDD**

Code	W	D	H
0338	800	380	1700



**RETURN
WWDD**

Code	W	D	H
0950	900	500	725
1250	1200	500	725

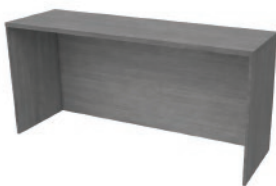
Include Glide Height 740-750



**BRIDGE
WWDD**

Code	W	D	H
1260	1200	600	740

Include Glide Height 740-750



**CREDENZA
WWDD**

Code	W	D	H
1650	1200	500	740

Include Glide Height 740-750



**BAS-H HUTCH
WWDD**

Code	W	D	H
1638	1600	380	960

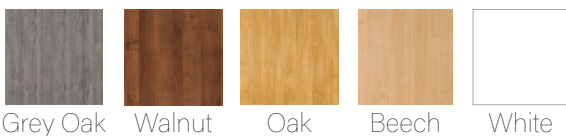


**DESKING
WWDD**

Code	W	D	H
1010	1000	600	740
1260	1200	600	740
1460	1400	600	740
1480	1400	800	740
1680	1600	800	740
1880	1800	800	740

Include Glide Height 740-750

COLOR OPTION



Grey Oak Walnut Oak Beech White



DIVIDE

Panel System

Acoustic/Privacy Integration | Modular Partition Support

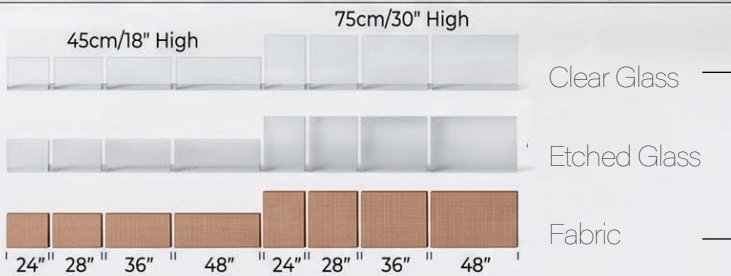
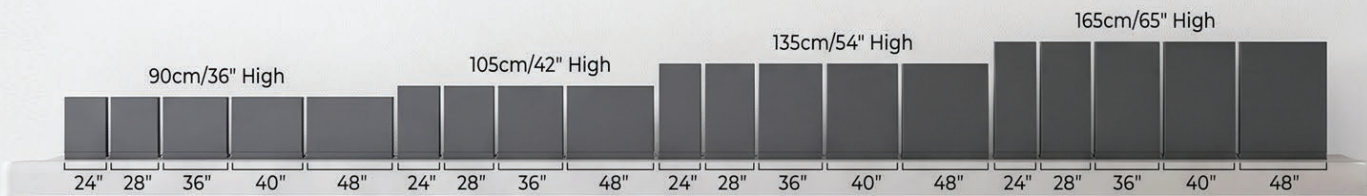
MODULAR WORKSTATIONS

Our modular workstations provide versatile configurations, from cubicles to open layouts, offering practical solutions for a range of office needs.

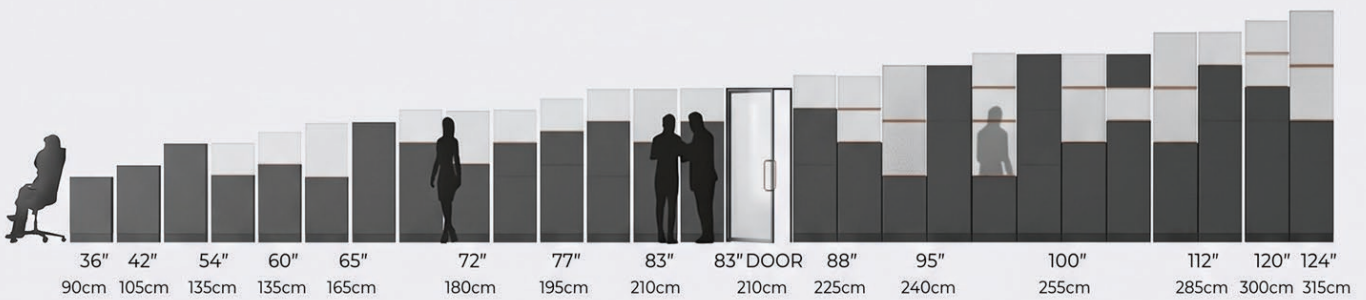
Manufactured by Young Industry Indonesia
Division of Young Corporation

Partition Options

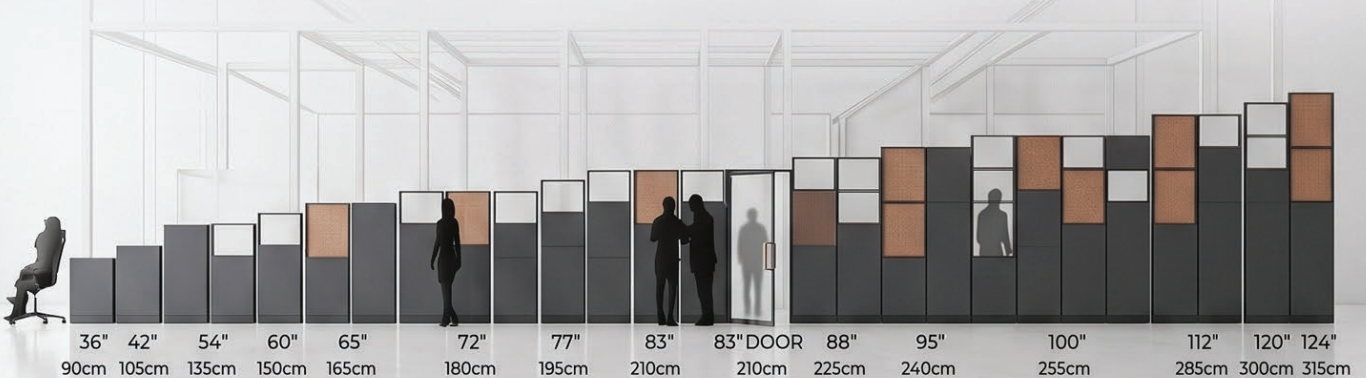
Stacked Monolithic Panels



Stacked Stack Tiles

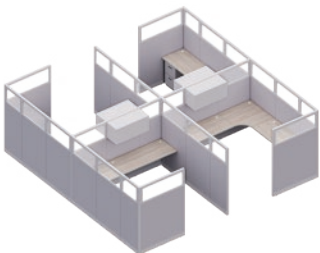


Monolithic Panels With Stack Tiles

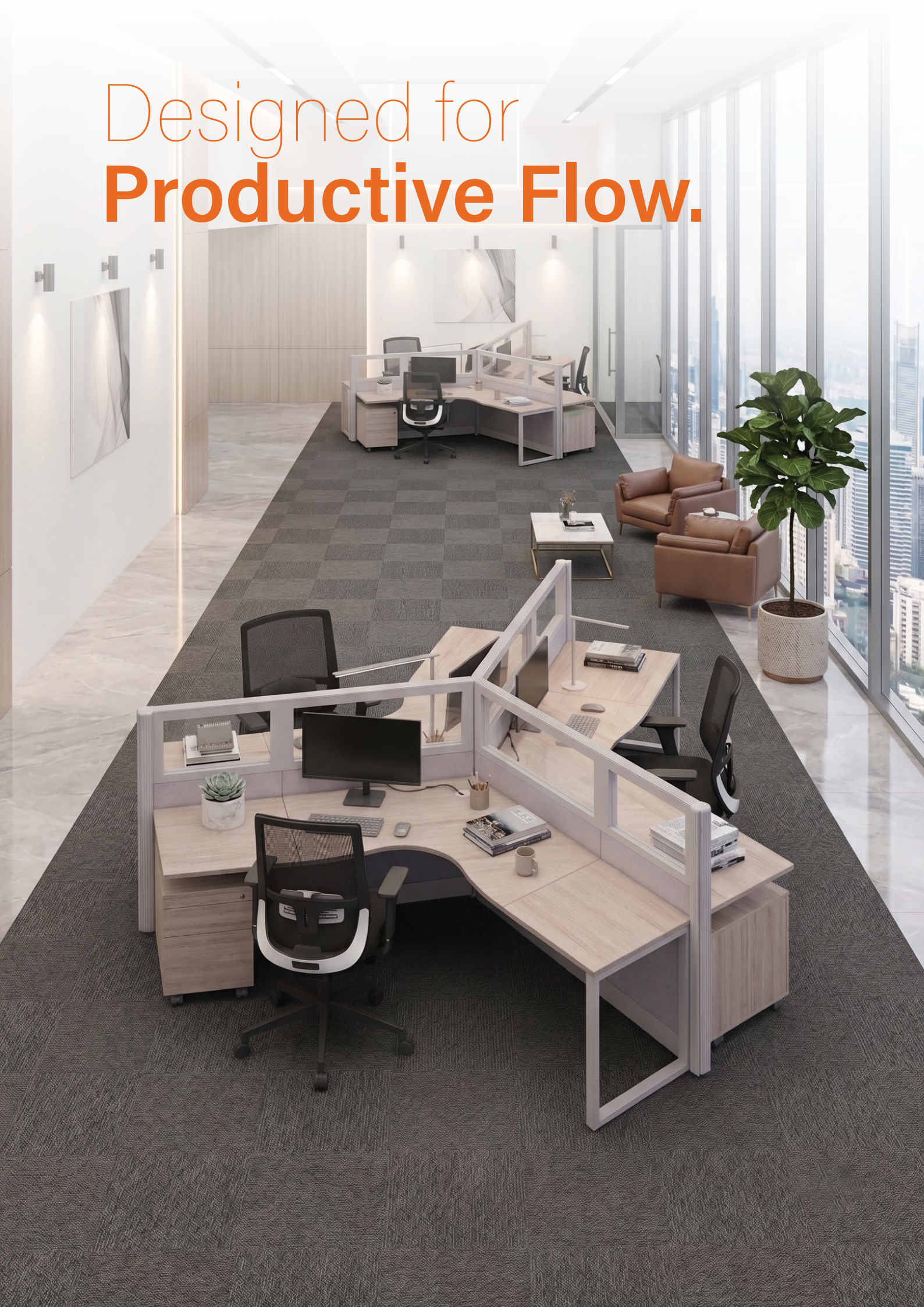




Configuration Options



Designed for **Productive Flow.**





MODULAR SOFA

Manufactured by Young Industry Indonesia
Division of Young Corporation

Modular Sofa

Type 1

Modern, slim lines and elegance describe the Lisbon Sofa. This modular design adapts to any space, offering flexibility, style, and lasting comfort.



- Fabric is Customisable

Modular Sofa

Type 2

A modern and simple modular sofa that offers flexibility and comfort. The modular design can be rearranged to adapt to any space and any design style.



- Fabric is Customisable
- Versatile Arm Placement



Coffee Table Collection



ASTER COFFEE TABLE



ASTER END TABLE



ASTER COFFEE TABLE COMBINATION



ZURICH
SQUARE COFFE TABLE



ZURICH
RECTANGLE COFFE TABLE



ZURICH
CENTER / END TABLE
WIRELESS CHARGER

The Quartz Collection

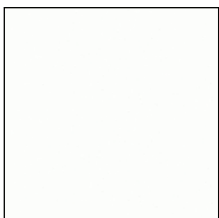
Quartz countertops bring a clean, elegant look to any kitchen. With rich texture, modern colors, and durable performance, they are designed to be both beautiful and practical for everyday use.

Made from natural quartz and advanced materials, Quartz offers strong durability, lasting beauty, and a smooth premium finish.

Quartz is non-porous, easy to clean, and resistant to bacteria and stains, making it ideal for kitchens, bathrooms, residential, and commercial spaces.



QUARTZ COLOR OPTION



PURE WHITE



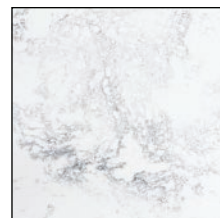
METROPOLIS
GREY



CHAGEE



CARRARA WHITE



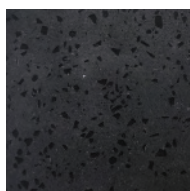
STEVRA



SANDBAR GREY



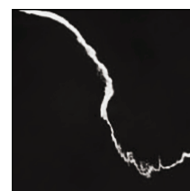
CHOCOLATE



BLACK ALTA



CALACATTA
SUMMER WHITE



CALACATTA
SUMMER BLACK



STATUORIO



OFFICE CHAIRS

Seating Solution

A collection of ergonomic chairs designed for all-day comfort and performance.
Crafted with precision to support productivity and elevate any workspace.

Manufactured by Young Industry Indonesia
Division of Young Corporation

EXECUTIVE

Task Seating



BELLAMY 2
Executive Seating

A modern ergonomic chair designed for daily comfort and professional workspaces. Featuring a grey mesh back, black fabric seat, 3D adjustable arms, tilt-lock mechanism, and a durable aluminium base with nylon casters.

Mesh Back | 3D Arm | Tilt Lock



ZAVELLO
Executive Seating

modern ergonomic office chair designed for clean, professional workspaces. Its white frame, breathable grey mesh, adjustable headrest, fixed armrests, and tilt-lock mechanism provide everyday comfort with a sleek executive look.

Mesh Back | Headrest | Tilt Lock

Configurable for commercial workplace environments with multiple finish, upholstery, and application options.

ESSENTIAL

Workspace Seating



NOVERA



MOTIVA



VALLORA



ORDIGO

Configurable for commercial workplace environments with multiple finish, upholstery, and application options.

TRAINING

Multipurpose Seating



ISO CHAIR

Color :



Simple stackable visitor chair with fabric cover, black powder-coated frame, and comfortable foam seat.

STACKABLE

Configurable for commercial workplace environments with multiple finish, upholstery, and application options.



Export-Ready Workspace Manufacturing

Quality. Reliability. Global Standards.



INDONESIA OFFICE

📍 Kawasan Industri Menara Permai
Jl. Raya Narogong KM 23
Cileungsi - Bogor 16820
Indonesia

📞 +62 811-1779-7158

🌐 ergostar.net/ergostar-deluxe

✉️ giselle@youngcorporation.com



USA OFFICE

📍 4261 Communications Drive,
Norcross, GA 30093

📞 1-877-374-6782



QR CODE:

